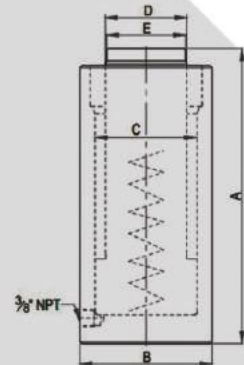
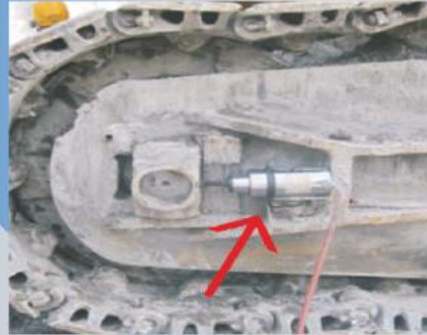


EXP SERIES GENERAL PURPOSE JACK



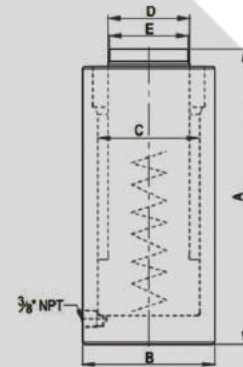
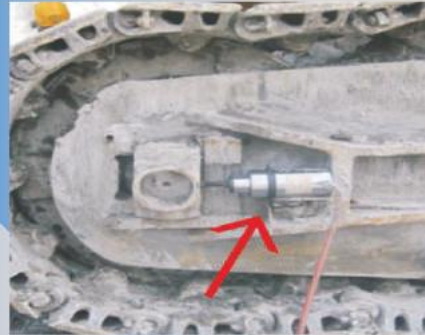
FEATURES / APPLICATION

- Single Acting Spring Return Upto 500 Tons.
- Best used in Maintenance, fabrication, construction, Heavy industries, power & process plants, shipyards.
- Compatible with all reputed brands pumping units.
- Gland Nut designed to withstand dead end load
- Base mounting holes & collar threads are optional.
- Used in horizontal & vertical directions
- Refer to anatomy for all VANKOS-HYD jacks.

CAPACITY 5 - 400 TON | STROKE 50 - 200 MM | MAX. WORKING PRESSURE 700 BAR

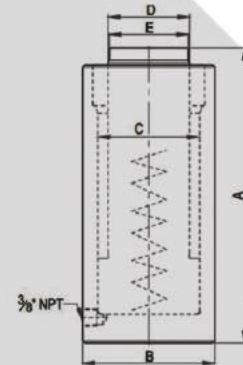
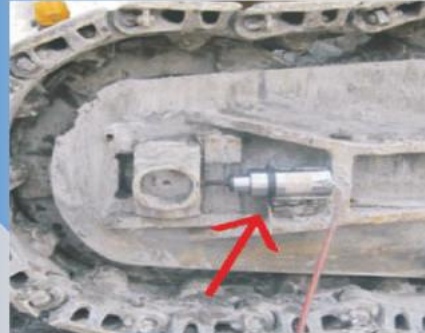
Rated Capacity (Ton)	Stroke (mm)	Model	Effective Area (cm ²)	Oil cap (cc)	A Closed Height (mm)	B Cylinder OD (mm)	C Bore Dia (mm)	D Ram Dia (mm)	E Saddle Dia (mm)	Wt (Approx.) (kg)
5	50	RC-EXP-5/50	8.0	40	135	45	32	25	25	1.5
5	100	RC-EXP-5/100	8.0	80	185	45	32	25	25	1.9
5	150	RC-EXP-5/150	8.0	121	235	45	32	25	25	2.4
10	50	RC-EXP-10/50	15.9	80	135	60	45	35	35	2.5
10	100	RC-EXP-10/100	15.9	159	185	60	45	35	35	3.2
10	150	RC-EXP-10/150	15.9	239	235	60	45	35	35	4
15	50	RC-EXP-15/50	23.8	119	140	70	55	45	43	4.1
15	100	RC-EXP-15/100	23.8	238	190	70	55	45	43	5.2
15	150	RC-EXP-15/150	23.8	356	240	70	55	45	43	6.3
15	200	RC-EXP-15/200	23.8	475	290	70	55	45	43	7.4
20	50	RC-EXP-20/50	31.2	156	145	80	63	50	48	5.3
20	100	RC-EXP-20/100	31.2	312	195	80	63	50	48	6.7
20	150	RC-EXP-20/150	31.2	468	245	80	63	50	48	8.1
20	200	RC-EXP-20/200	31.2	623	295	80	63	50	48	9.5
25	50	RC-EXP-25/50	38.5	192	155	90	70	55	53	7.2
25	100	RC-EXP-25/100	38.5	385	205	90	70	55	53	9.0
25	150	RC-EXP-25/150	38.5	577	255	90	70	55	53	10.8

EXP SERIES GENERAL PURPOSE JACK



Rated Capacity (Ton)	Stroke (mm)	Model	Effective Area (cm ²)	Oil cap (cc)	A Closed Height (mm)	B Cylinder OD (mm)	C Bore Dia (mm)	D Ram Dia (mm)	E Saddle Dia (mm)	Wt (Approx.) (kg)
25	200	RC-EXP-25/200	38.5	770	305	90	70	55	53	12.6
30	50	RC-EXP-30/50	44.2	221	160	100	75	60	58	9
30	100	RC-EXP-30/100	44.2	442	210	100	75	60	58	11.3
30	150	RC-EXP-30/150	44.2	442	260	150	75	60	58	11.3
30	200	RC-EXP-30/200	44.2	884	310	100	75	60	58	15.8
50	50	RC-EXP-50/50	78.5	393	175	130	100	80	78	16.5
50	100	RC-EXP-50/100	78.5	785	225	130	100	80	78	20.5
50	150	RC-EXP-50/150	78.5	1178	275	130	100	80	78	24.5
50	200	RC-EXP-50/200	78.5	1571	325	130	100	80	78	28.5
75	50	RC-EXP-75/50	113.1	565	180	155	120	95	93	24
75	100	RC-EXP-75/100	113.1	1131	230	155	120	95	93	29.5
75	150	RC-EXP-75/150	113.1	1696	280	155	120	95	93	35
75	200	RC-EXP-75/200	113.1	2262	330	155	120	95	93	41
100	50	RC-EXP-100/50	153.9	770	185	180	140	110	108	33
100	100	RC-EXP-100/100	153.9	1539	235	180	140	110	108	40.5
100	150	RC-EXP-100/150	153.9	2309	285	180	140	110	108	48
100	200	RC-EXP-100/200	153.9	3079	335	180	140	110	108	55.5
150	50	RC-EXP-150/50	227.0	1135	200	220	170	140	138	54
150	150	RC-EXP-150/150	227.0	3405	300	220	170	140	138	77
200	50	RC-EXP-200/50	314.2	1571	215	255	200	160	158	76
200	100	RC-EXP-200/100	314.2	3142	265	255	200	160	158	91

EXP SERIES GENERAL PURPOSE JACK



Rated Capacity (Ton)	Stroke (mm)	Model	Effective Area (cm ²)	Oil cap (cc)	A Closed Height (mm)	B Cylinder OD (mm)	C Bore Dia (mm)	D Ram Dia (mm)	E Saddle Dia (mm)	Wt (Approx.) (kg)
200	150	RC-EXP-200/150	314.2	4712	315	255	200	160	158	106.5
250	100	RC-EXP-250/100	380.1	3801	270	280	220	180	177	114
250	150	RC-EXP-250/150	380.1	5702	320	280	220	180	177	133
250	200	RC-EXP-250/200	380.1	7603	370	280	220	180	177	152
300	100	RC-EXP-300/100	452.4	4524	285	310	240	200	196	149
300	150	RC-EXP-300/150	452.4	6786	335	310	240	200	196	173
300	200	RC-EXP-300/200	452.4	9048	385	310	240	200	196	197
400	150	RC-EXP-400/150	572.6	8588	365	350	270	220	216	239
400	200	RC-EXP-400/200	572.6	11451	415	350	270	220	216	269

OPTIONAL FEATURES AVAILABLE ON REQUEST:

- Base mounting holes for fixturing
- Collar threads
- Tilt saddle
- Customized Lifting Stroke Upto 300mm



- Higher capacity and customized solutions on request.
- Specifications are subject to change due to continual improvement.
- Capacity and Stroke specified are maximum safe limits.
- Use at 80% of rating as safe practice.

SELECT SUITABLE PUMPING UNITS AND ACCESSORIES



Vankos & Company (Hyderabad)

Plot No. 457 & 458, S.V.C.I.E, IDA, Phase-I, Jeedimetla, Hyderabad-500055
sales@vankoshyd.com | www.vankoshyd.com